

# CARBON FOOTPRINT DASHBOARD EXPLAINER

We believe that climate change is a significant investment issue now and into the future. Understanding how an investment manager is incorporating climate change in their investment decision-making, ownership practices and advocacy is important information for clients and other stakeholders.

We provide a climate change statement on our website which is consistent with the Task-force for Climate Related Financial Disclosure's (TCFD's) recommendations.

In addition, each of our investment teams provides a climate change statement articulating the approach they take to managing climate change risks and opportunities. This disclosure sits alongside information on how they consider environmental, social and corporate governance issues more broadly.

## Some of the issues we raised in our 2016 report which is important to be mindful of includes:

- Data quality and availability issues, around 50% of emissions are estimates as not all companies report
- Dividing Emissions by Sales is often not the best intensity measure (see below) but has been recommended by the Task Force for Climate Related Financial Disclosures
- Transition and stranded asset risks are not captured in carbon footprints
- Other risks including physical risks are not captured in carbon footprints.

With these climate change statements we also provide interactive carbon footprint reports for each listed equity team and the organisation as a whole. This document provides information on what these footprints show and don't show.

In previous years we have discussed the benefits and issues associated with carbon footprinting. Please see our 2016 RI Report for full details. Notwithstanding these issues, carbon footprinting is an important lens for considering portfolio exposure to greenhouse gas emissions when considered in context with other metrics.

We will continue to improve our climate change, carbon and ESG disclosure and welcome any feedback or suggestions.



967 1,015  
Companies Covered



88,314M 90,955M  
\$ Covered

## Coverage

Our interactive footprint reports the emissions of the companies we invest in at a team level. This means we add the holdings in all the team's portfolios and compare them to the sum of their respective benchmarks.

The coverage numbers show what proportion of companies held by the team have available carbon data from MSCI. This is presented as both the number of companies and dollars invested.



3,683,789 tCO2e  
Weighted Ave Emissions (Scope 1+2)



-48.1%  
Diff Weighted Ave Emissions vs Benchmark (Aggregated)



372.2 tCO2e  
Weighted Ave Intensity (Scope 1+2/\$m Sales)



-18.8%  
Diff Weighted Ave Intensity vs Benchmark (Aggregated)

## Weighted average emissions and emissions intensity

Rather than disclose a straight average we use a weighted average based on the size of our holding in each company.

The weighted average is of each company's greenhouse gas emissions (scope 1 and 2<sup>1</sup>).

We compare this to the weighted average emissions for the companies in the aggregated benchmark.

Intensity normalises company emissions for size by dividing emissions by \$ sales, which means larger companies (with more emissions) can be compared to smaller companies. It should show which company is more efficient. We have concerns around using sales because other factors like currency or commodity prices can have a large effect on dollars of sales with no effect on emissions. However, this method has been recommended by the TCFD<sup>2</sup> and we support increased comparability of investor reporting. Over time we will include additional measures to supplement emissions intensity.

<sup>1</sup> Scope 1: All direct GHG emissions. Direct GHG emissions are emissions from sources that are owned or controlled by the reporting entity. Scope 2: Indirect GHG emissions from consumption of purchased electricity, heat or steam. <sup>2</sup> TCFD, page 43 <https://www.fsb-tcfd.org/wp-content/uploads/2017/06/FINAL-TCFD-Annex-062817.pdf>



3.2

Ave Fossil Fuel Comp per Portfolio

## Fossil Fuel Companies

This indicator shows the average number of fossil fuel companies (as defined by MSCI) per portfolio. This includes companies who mine fossil fuels as well as generators of fossil based energy sources as well as other users of fossil fuels.

## Difference in emissions intensity by country

In the map, the colour of each country shows the difference between weighted average emissions intensity (as defined above) for the team vs the aggregated benchmark. If a team has 100% more emissions it will appear dark red, while 100% less will show dark green.

Numbers which appear over the country show the % dollar exposure the team has to each country.

Clicking on a country filters the rest of the dashboard to only show companies from that country. Hovering over a country reveals more information.

## Difference in emissions intensity by sector

Similar to the country map, this chart shows the difference in weighted average emissions intensity between the team's holdings and the benchmark by sector. The colour of each rectangle shows this difference. The size of the rectangle shows the percentage exposure of the team to each sector.

Clicking on a sector filters the rest of the dashboard to only show companies from that country. Hovering over a sector reveals more information.

## Emissions and emissions intensity through time

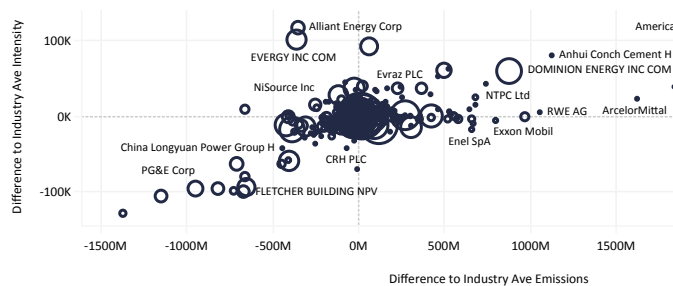
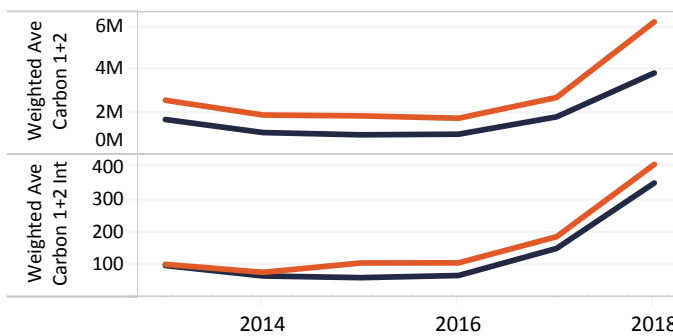
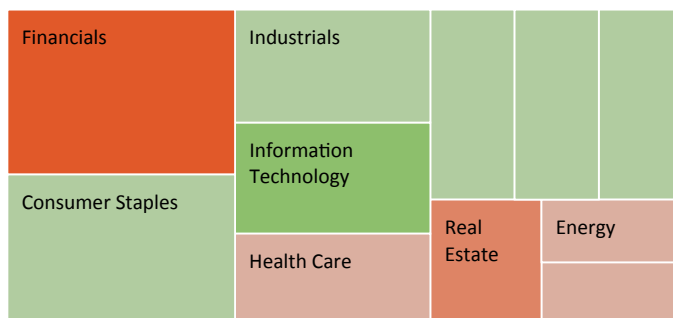
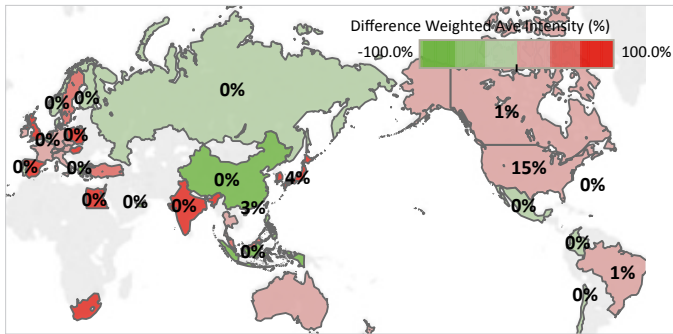
The chart shows weighted average emissions for the team (blue line) vs the aggregated benchmark (orange line) for the last five years. This is provided for both total emissions and emissions intensity because both measures need to fall over time to meet the Paris Climate Change Agreement targets.

## Company scatter plot

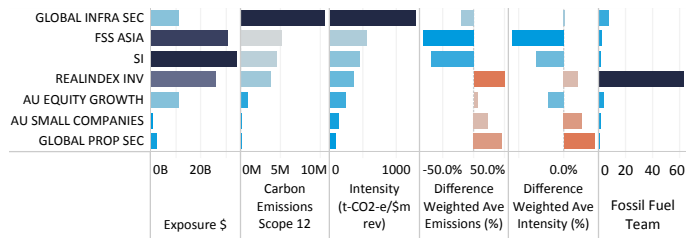
The scatter plot shows the difference between each company held by the team and the industry average for the company. The x-axis shows this for total emissions while the y-axis shows this for emissions intensity. Companies to the bottom left perform better on these measures than companies to the top right.

The size of the circle is proportionate to the \$ exposure to the company for all portfolios.

Selecting a group of companies filters the rest of the dashboard to only show those companies. Hovering over a company reveals more information.



Source: MSCI / CFSGAM June 2018. For illustrative purposes only.  
 2 TCFD, page 43 <https://www.fsb-tcfd.org/wp-content/uploads/2017/06/FINAL-TCFD-Annex-062817.pdf>



## Top emissions table

For the dashboard which covers all teams (available with our climate change statement) the table shows a break down of measures for each team including:

- Total assets under management
- Weighted average emissions for the team
- Weighted average emissions intensity for the team
- The difference between each teams weighted average and their benchmark for both measures
- The average number of fossil fuel companies held in each portfolio.

For the individual investment team reports (available in each listed equity team's profile page) the table shows information for the ten largest contributors to the team's weighted average emissions. The table shows:

- \$ Exposure across all portfolios
- Total carbon emissions (scope 1 & 2)
- What contribution these emissions make to the weighted average for the team
- The company's emissions intensity
- What contribution the emissions makes to the weighted average intensity for the team
- The difference between the company's emissions intensity and the industry average.

<sup>2</sup> Scope 1: All direct GHG emissions. Direct GHG emissions are emissions from sources that are owned or controlled by the reporting entity. Scope 2: Indirect GHG emissions from consumption of purchased electricity, heat or steam.

### Important information

This document has been prepared for general informational purposes only and is only intended to provide a summary of the subject matter covered. It does not purport to be comprehensive or to give advice. The views expressed are the views of the writer at the time of issue and may change over time. This is not an offer document and does not constitute an offer or invitation or investment recommendation to distribute or purchase securities, shares, units or other interests or to enter into an investment agreement. No person should rely on the content and/or act on the basis of any material contained in this document.

This document is confidential and must not be copied, reproduced, circulated or transmitted, in whole or in part, and in any form or by any means without our prior written consent. The information contained within this document has been obtained from sources that we believe to be reliable and accurate at the time of issue but no representation or warranty, express or implied, is made as to the fairness, accuracy, or completeness of the information. We do not accept any liability whatsoever for any loss arising directly or indirectly from any use of this document.

References to "we" or "us" are references to Colonial First State Global Asset Management (CFSGAM) which is the consolidated asset management division of the Commonwealth Bank of Australia ABN 48 123 123 124. CFSGAM includes a number of entities in different jurisdictions, operating in Australia as CFSGAM and as First State Investments (FSI) elsewhere.

### Hong Kong and Singapore

In Hong Kong, this document is issued by First State Investments (Hong Kong) Limited and has not been reviewed by the Securities & Futures Commission in Hong Kong. In Singapore, this document is issued by First State Investments (Singapore) whose company registration number is 196900420D and has not been reviewed by the Monetary Authority of Singapore. First State Investments and First State Stewart Asia are business names of First State Investments (Hong Kong) Limited. First State Investments (registration number 53236800B) and First State Stewart Asia (registration number 53314080C) are business divisions of First State Investments (Singapore).

### Australia

In Australia, this document is issued by Colonial First State Asset Management (Australia) Limited AFSL 289017 ABN 89 114 194311, Colonial First State Managed Infrastructure Limited AFSL 240550 ABN 13 006 464 428.

### United Kingdom and European Economic Area ("EEA")

In the United Kingdom, this document is issued by First State Investments (UK) Limited which is authorised and regulated in the UK by the Financial Conduct Authority (registration number 143359). Registered office: Finsbury Circus House, 15 Finsbury Circus, London, EC2M 7EB, number 2294743.

Outside the UK within the EEA, this document is issued by First State Investments International Limited which is authorised and regulated in the UK by the Financial Conduct Authority (registration number 122512). Registered office 23 St. Andrew Square, Edinburgh, EH2 1BB number SC079063.

### Middle East

In the Middle East this material is communicated by First State Investments (Singapore).

### Kuwait

This presentation is not for general circulation to the public in Kuwait. Shares in the Companies, and any other securities referred to, have not been licensed for offering in Kuwait by the Kuwait Capital Markets Authority or any other relevant Kuwaiti government agency. Any offering in Kuwait on the basis of a private placement or public offering is, therefore, restricted in accordance with Law No. 7 of 2010 and the bylaws thereto (as amended). No private or public offering is being made in Kuwait, and no agreement relating to the sale of any securities will be concluded in Kuwait. No marketing or solicitation or inducement activities are being used to offer or market securities in Kuwait.

### UAE/Dubai International Financial Centre (DIFC)

This information does not constitute or form part of any offer to issue or sell, or any solicitation of any offer to subscribe for or purchase, any securities or investment products in the UAE (including the Dubai International Financial Centre and the Abu Dhabi Global Market) and accordingly should not be construed as such. Furthermore, this information is being made available on the basis that the recipient acknowledges and understands that the entities and securities to which it may relate have not been approved, licensed by or registered with the UAE Central Bank, the Dubai Financial Services Authority, the UAE Securities and Commodities Authority, the Financial Services Regulatory Authority or any other relevant licensing authority or governmental agency in the UAE. The content of this report has not been approved by or filed with the UAE Central Bank, the Dubai Financial Services Authority, the UAE Securities and Commodities Authority or the Financial Services Regulatory Authority.

### United States

In the United States, this document is issued by First State Investments (US) LLC. This material is solely for the attention of institutional, professional, qualified or sophisticated investors and distributors who qualify as qualified purchasers under the Investment Company Act of 1940 and as accredited investors under Rule 501 of SEC Regulation D under the US Securities Act of 1933. It is not to be distributed to the general public, private customers or retail investors in any jurisdiction whatsoever.